

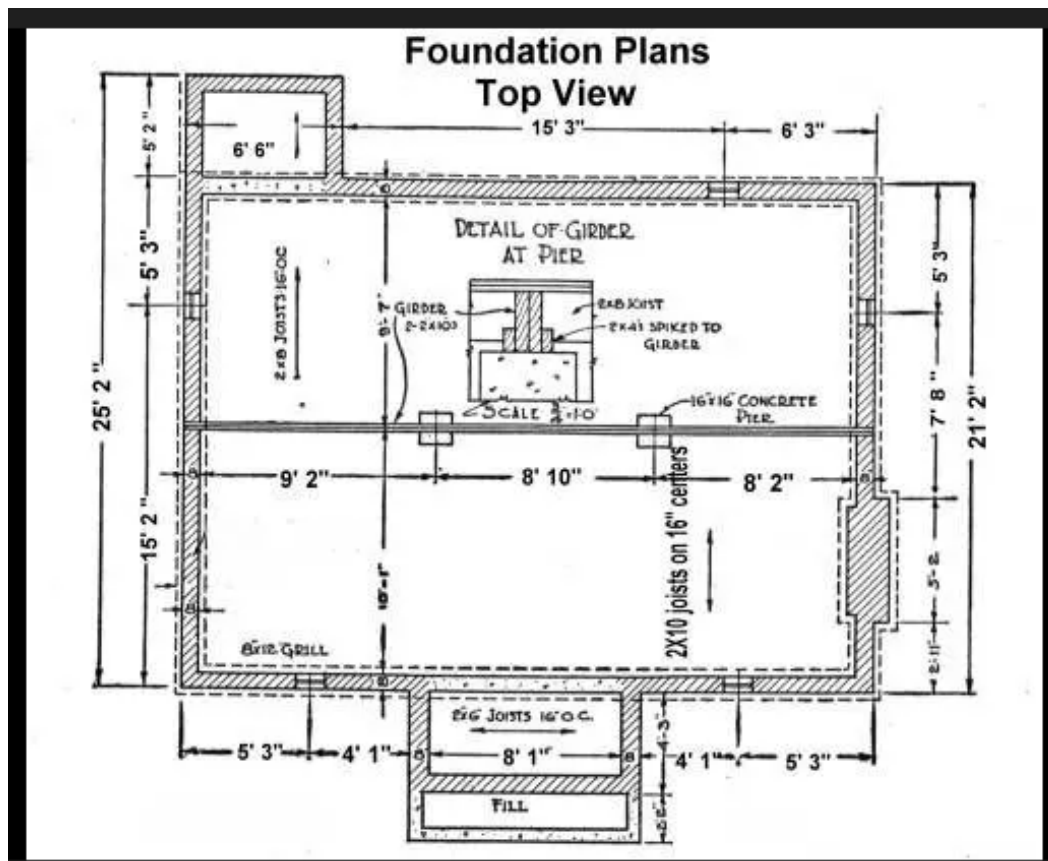
New Construction – General Requirements Guide

1. Site Plan

Please see residential site plan guide.

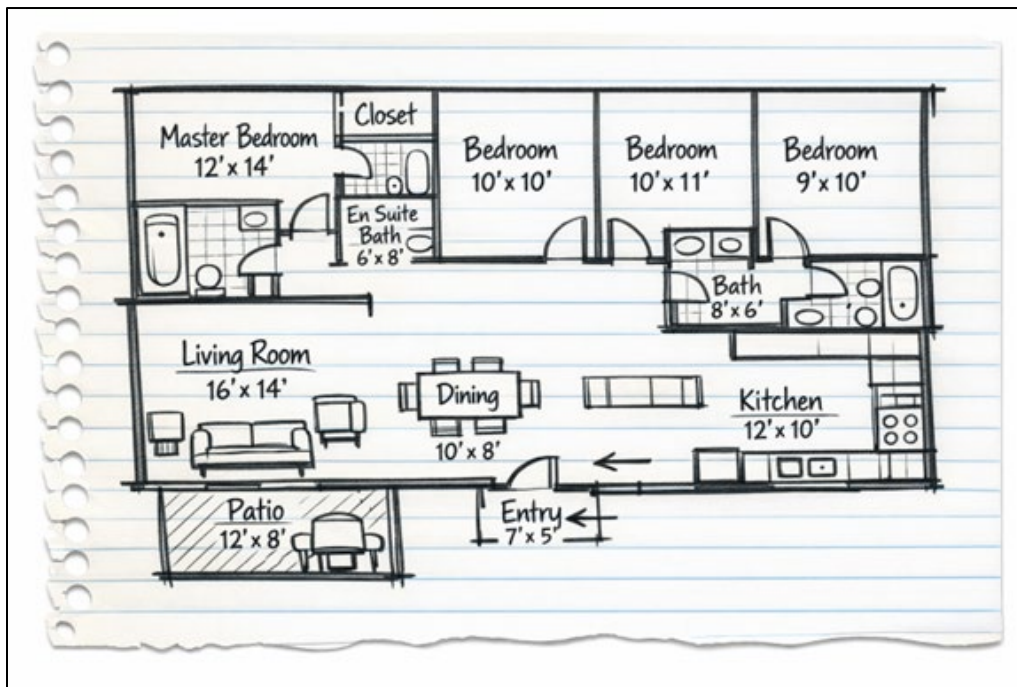
2. Footing and Foundation Plan

- Footing width and depth
- Reinforcement details
- Foundation wall thickness
- Code compliance details



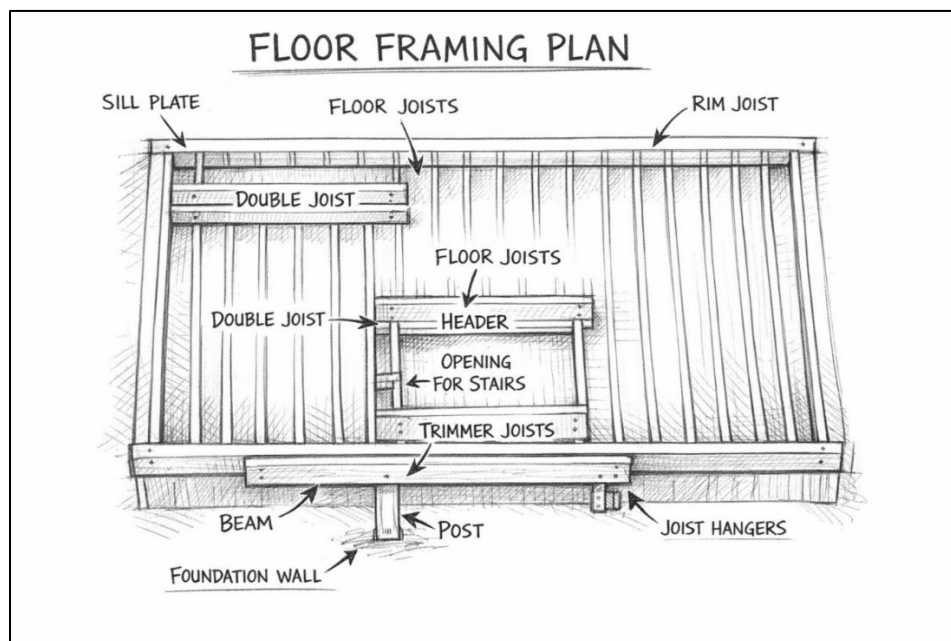
3. Floor Plan

- Complete layout with room labels
- Room dimensions
- Door and window sizes and locations
- Overall building dimensions



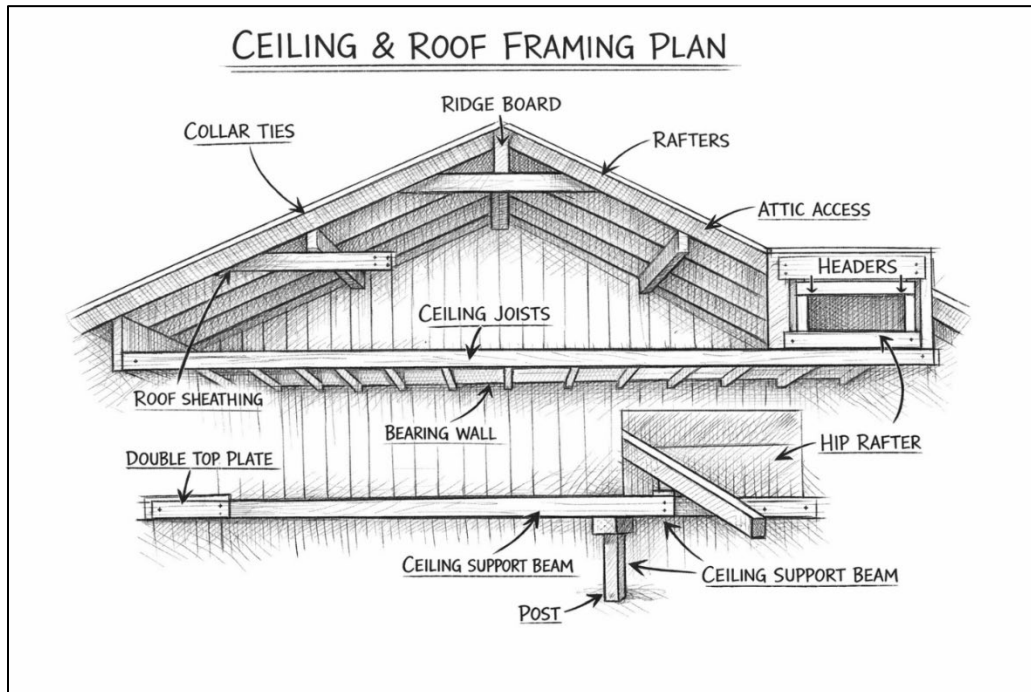
4. Floor Framing Plan

- Floor system type
- Joist, beam and girder sized and spacing
- Span lengths
- Subfloor material
- Insulation R-values



5. Ceiling and Roof Plan

- Roof framing method (truss or stick framed)
- Ceiling joist and rafter sizes and spacing (if stick-framed)
- Collar ties
- Sheathing
- Underlayment
- Roof covering type



6. General Notes

- Plans must be drawn to scale
- Provide sufficient detail to demonstrate code compliance
- All structural elements must include size and spacing
- Additional information may be required during review