

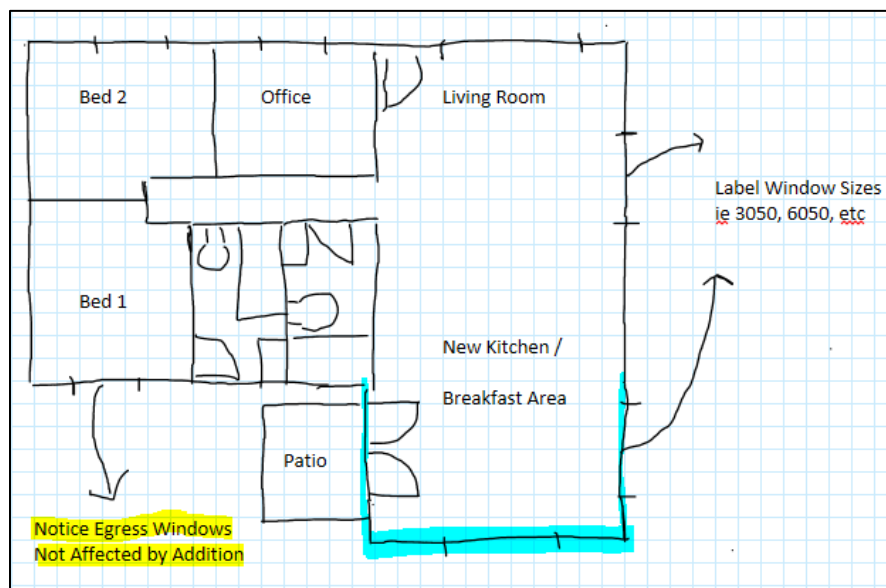
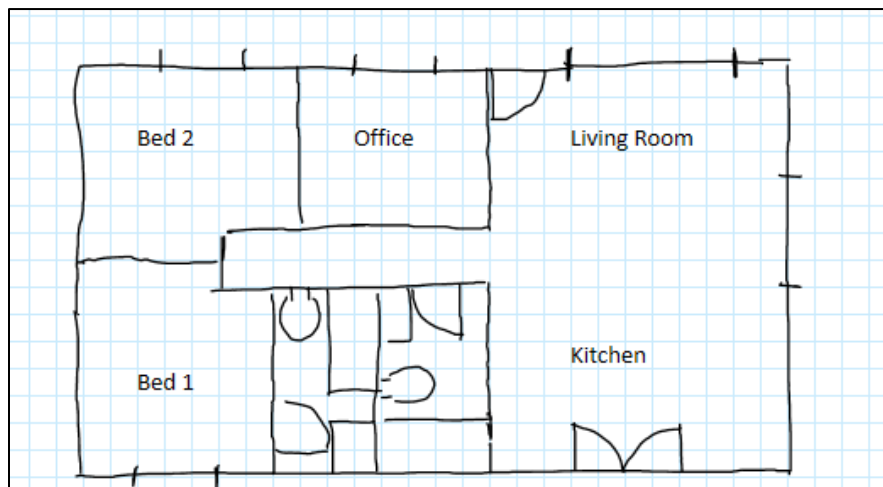
## Residential Addition – General Requirements Guide

### 1. Site Plan

*Please see residential site plan guide*

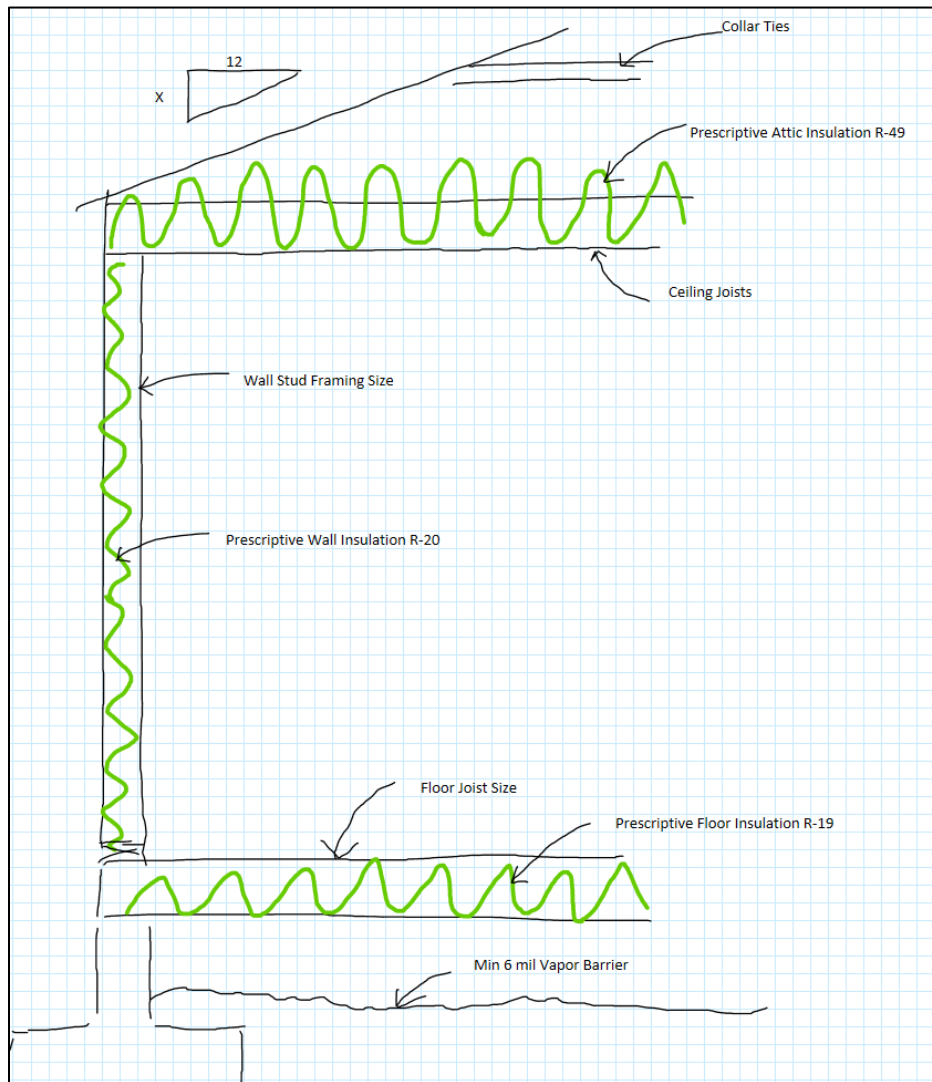
### 2. Floor Plan (Existing + Proposed Addition)

- Label all rooms clearly
- Include room dimensions for both existing and new spaces
- Show window and door locations with sizes
- Provide notes describing all work to the existing structure



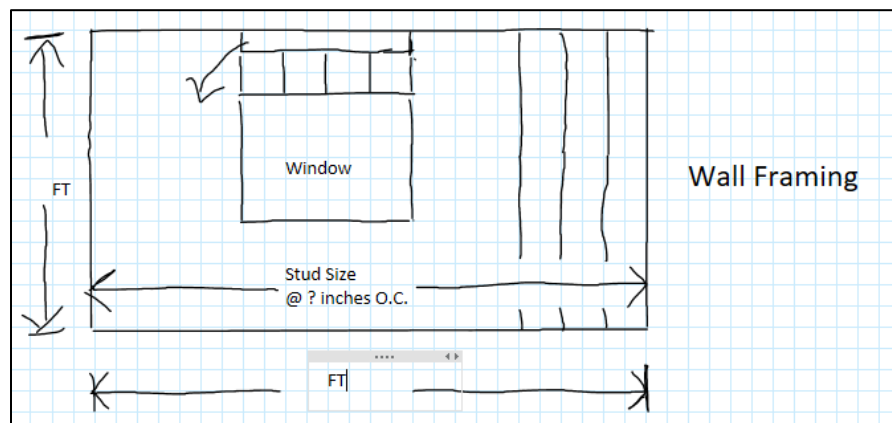
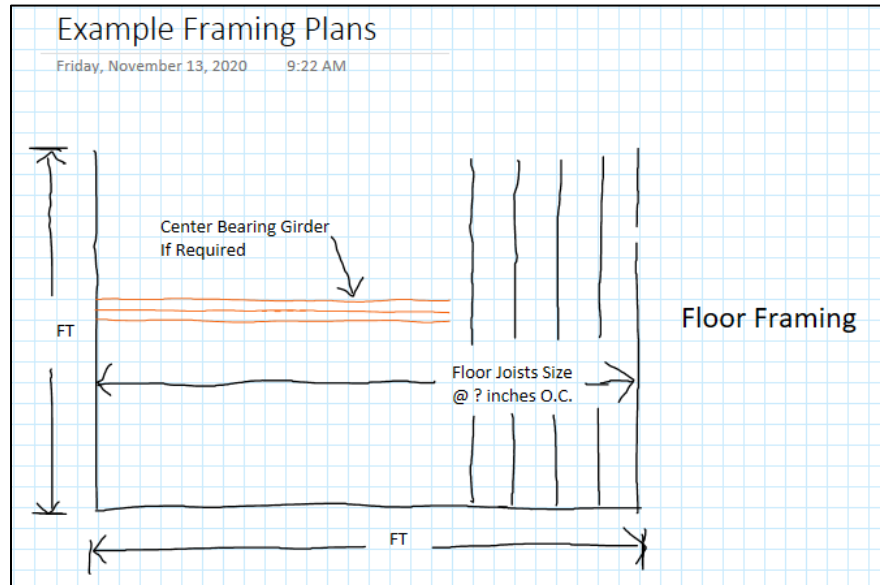
### 3. Wall Section Detail

- Show section from footing to roof
- Include footing and foundation details
- Specify stud size and spacing
- List insulation R-values
- Indicate interior and exterior finish materials
- Include structural components such as headers, beams, and rafters



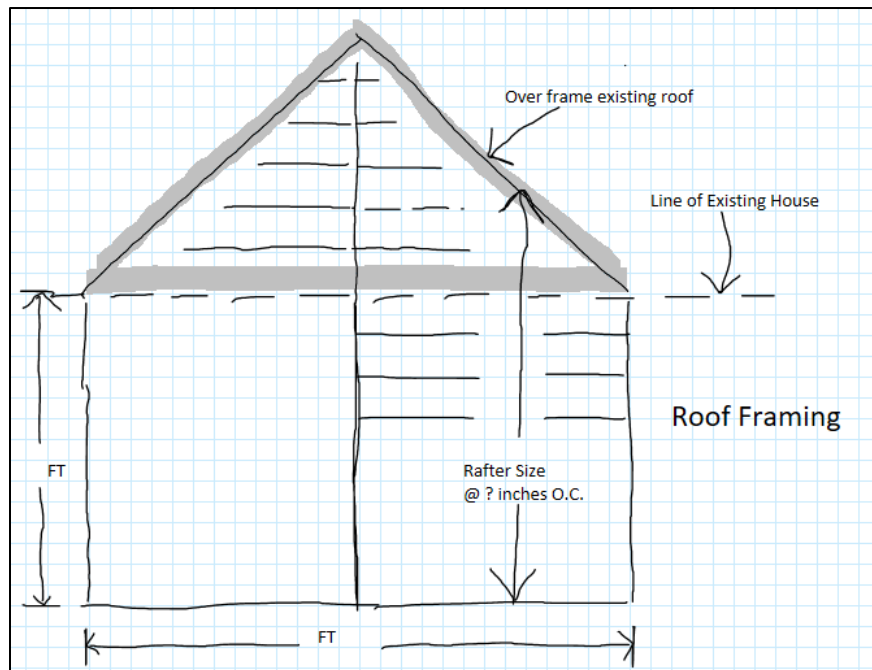
#### 4. Framing Plan

- Provide floor, wall, and roof framing details
- List size, spacing, and spans of joists, beams, and headers



#### 5. Roof Plan

- Indicate roof framing method (trusses or stick-framed)
- Specify joist, rafter, and collar tie sizes and spacing
- List roof sheathing, underlayment, and covering material
- Note: Truss engineering drawings must be provided at inspection if trusses are used



## 6. General Notes

- Plans must be drawn to scale
- Provide sufficient detail to demonstrate code compliance
- All structural elements must include size and spacing
- Additional information may be required during review